

Appendix

Less is more or more is more? Re-partnering and completed cohort fertility in Finland

Linus Andersson, Marika Jalovaara, Caroline Uggla, and Jan Saarela

Note on Appendix figures A5 to A10: Figure A5 to Figure A10 provide various specifications to Figure 1. Model A in these figures uses the same specifications as in Figure 1, controlling only for birth cohort. Models B and C have different specifications. Previous research finds that the separated and the re-partnered population have fewer cumulated years with a partner than those in intact marriages/unions, and thus less in-union exposure when the risk of childbearing is greatest (Hoem et al. 2013). We therefore analyze how correlates of union dissolution and re-partnering may influence the association observed above. Model B account for group differences in union duration by age 46. Separated and re-partnered individuals start their first union at an earlier age than those who remain within a single union (Raley & Sweeney 2020), which provides time for childbirths in first and higher order unions. Model C adjusts for the age at first union among those who ever-partnered (note that never-partnered individuals are excluded in Model C). Moreover, a set of control variables are added as described in caption and in the methods section. In Figures A7 to A10, the data are restricted to those with childbearing first unions.

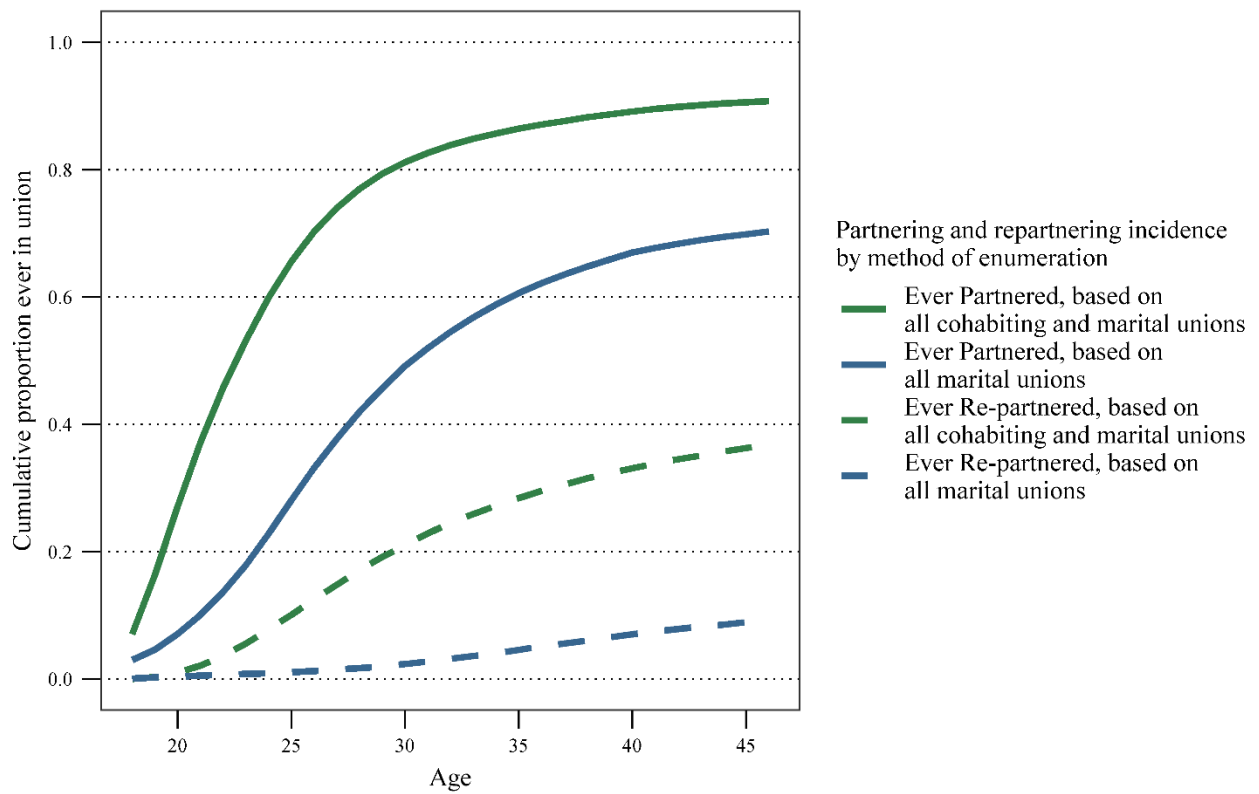


Figure A1. Cumulative fraction ever partnered and ever re-partnering in ages 18 to 46, as estimated from marriages versus from marriages and cohabiting unions

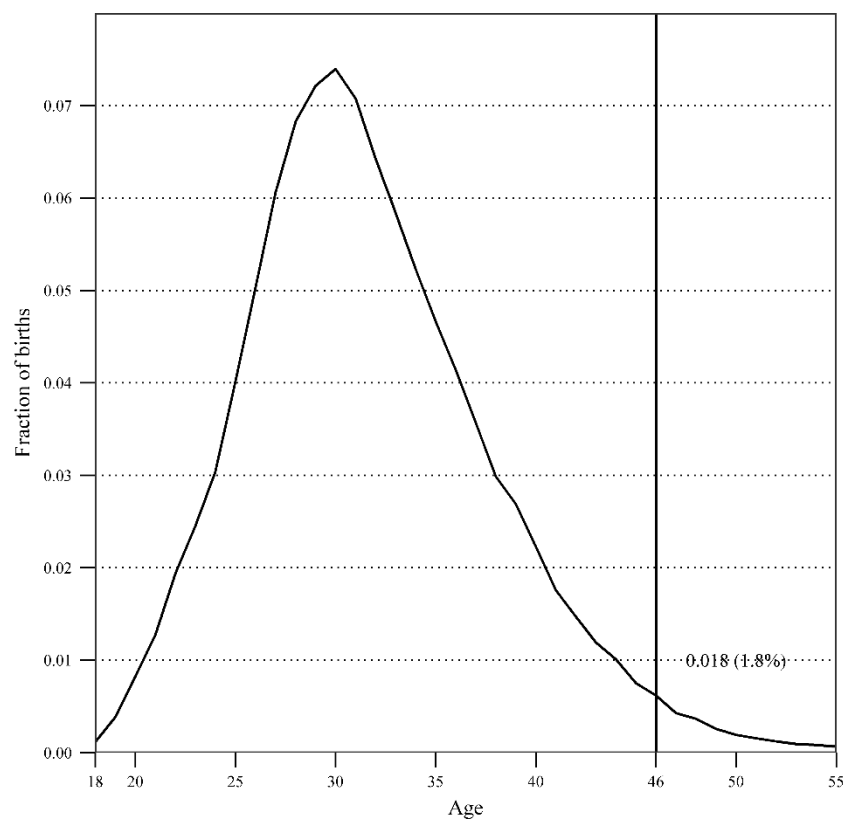


Figure A2. Fraction of births in each one-year category in ages 18–55 for the 1963 male birth cohort.

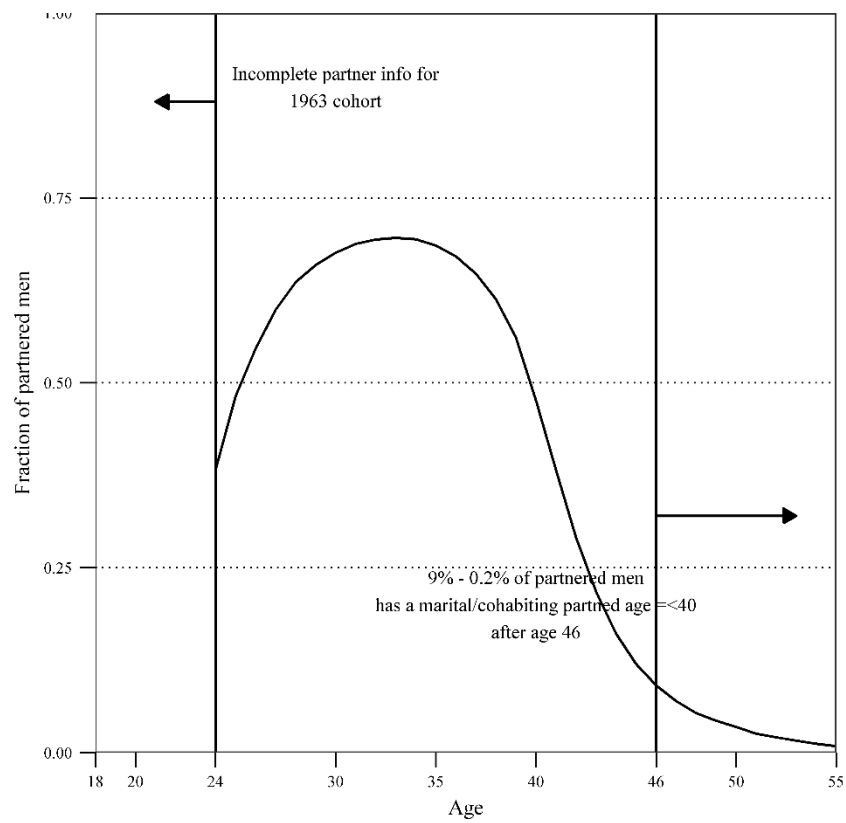


Figure A3. Fraction of (female) partners aged 40 or younger in each one-year category of men aged 24–55 years for the 1963 birth cohort of married or cohabiting men.

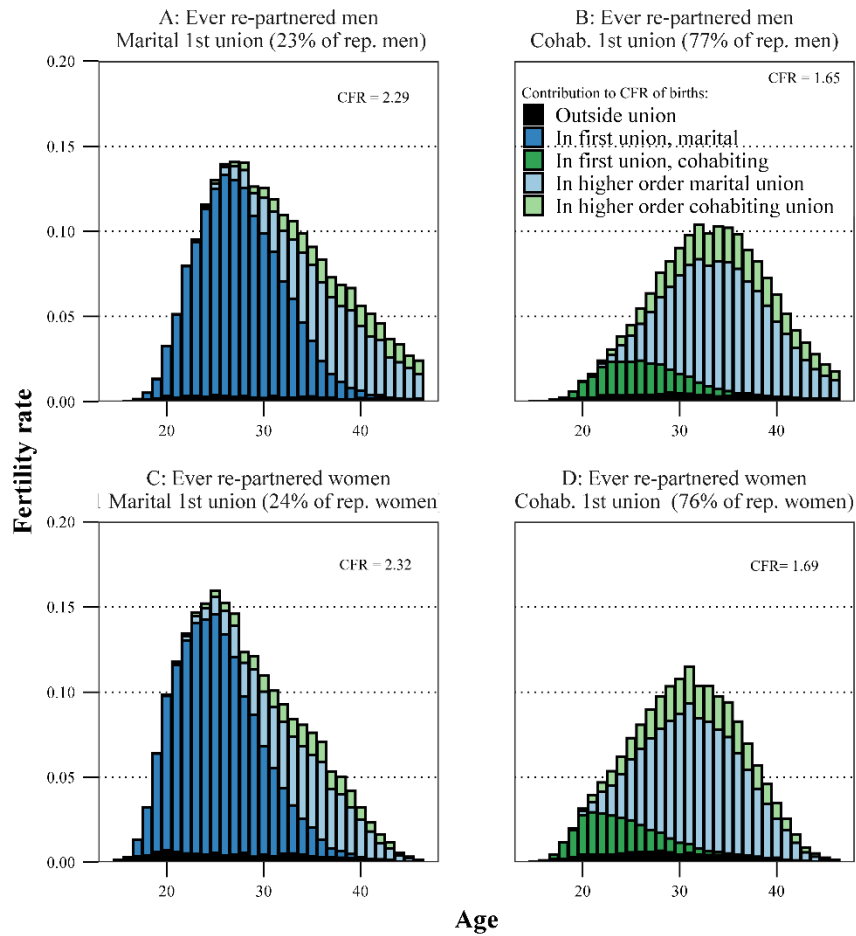


Figure A4. The proportional contribution of births by parentage (union-order) and by union civic status to total cohort fertility. Age-specific fertility rates of (A) ever partnered, first union is marital, men (B) ever re-partnered, first union is cohabiting, men, (C) ever partnered, first union is marital, women, and (D), ever re-partnered, first union is cohabiting, women.

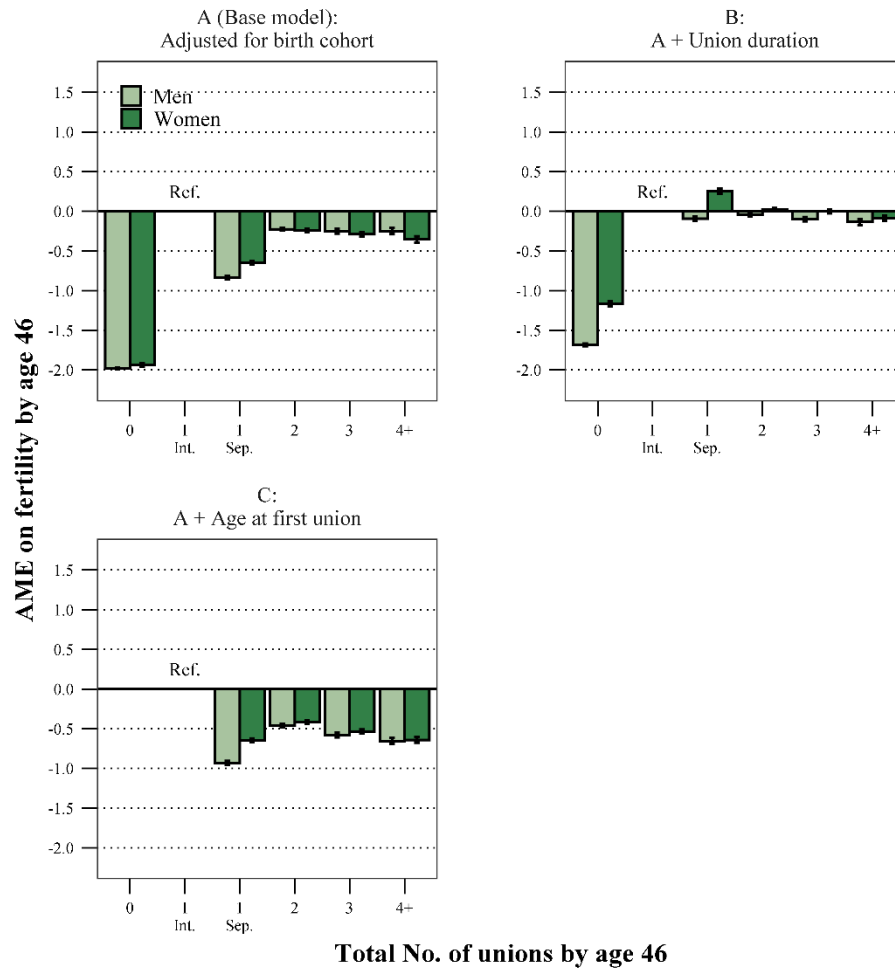


Figure A5. AMEs (95% CIs) of the number of all unions (cohabitations and marriages) on cohort fertility by age 46 for men and women, adjusted for (A) birth cohort (N=239,425), (B) birth cohort and union duration (N=239,425), and (C) birth cohort and age at first union (N=215,981). All models adjusted for parents' socioeconomic position, urban/rural residence, income, and education

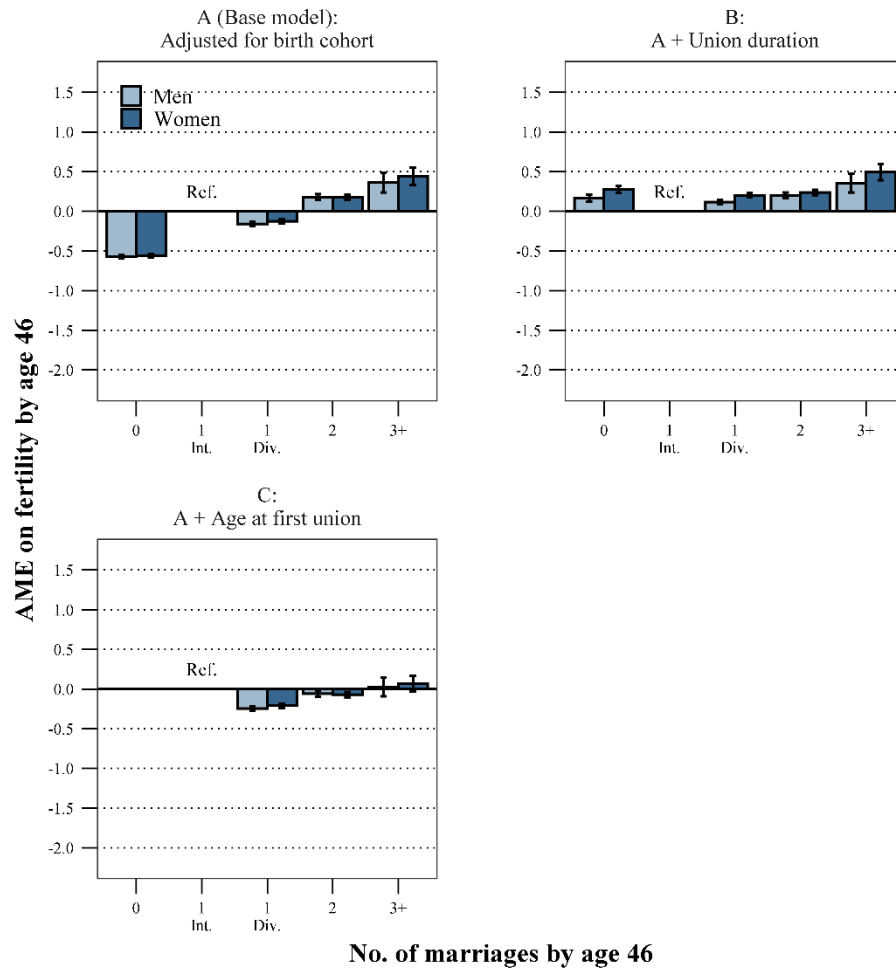


Figure A6. AMEs (with 95% CIs) of the number of marriages on cohort fertility by age 46 for men and women, adjusted for (A) birth cohort (N=239,425), (B) birth cohort and union duration (N=239,425), and (C) birth cohort and age at first union (N=163,700). All models adjusted for parents' socioeconomic position, urban/rural residence, income, and education

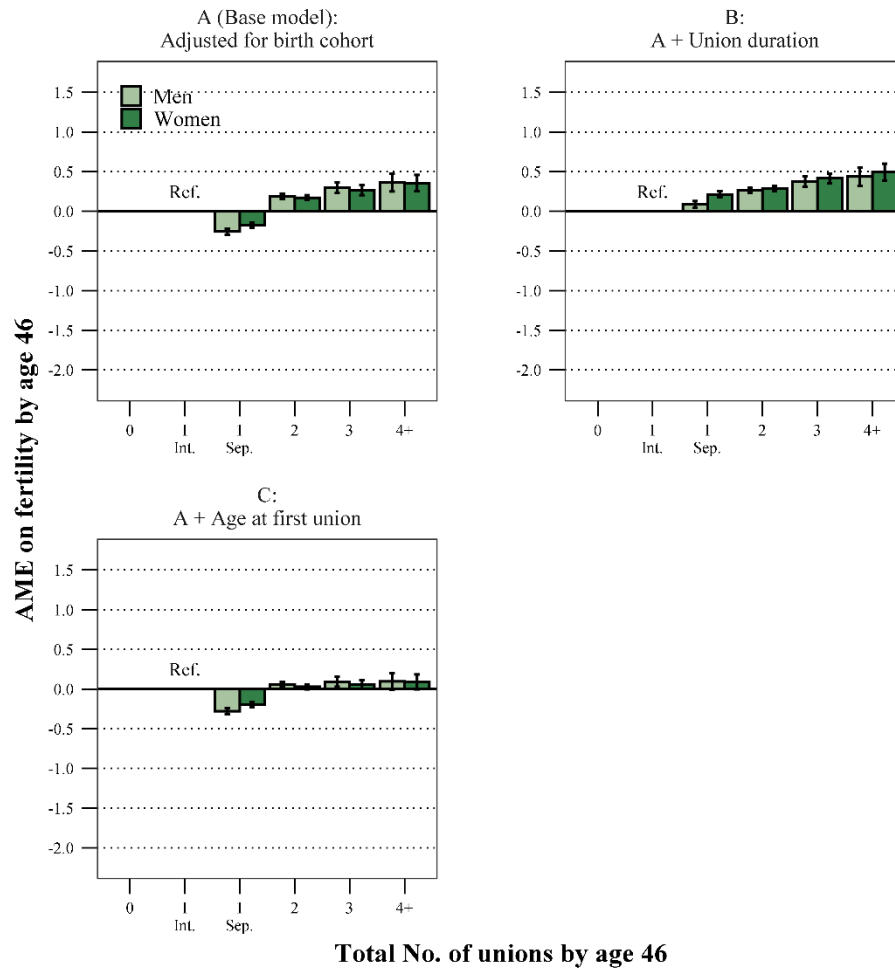


Figure A7. AMEs (95% CIs) of the number of all unions (cohabitations and marriages) on cohort fertility by age 46 for men and women who had at least one child in a first order union by age 46, adjusted for (A) birth cohort (N=129,351), (B) birth cohort and union duration (N=129,351), and (C) birth cohort and age at first union (N=129,351).

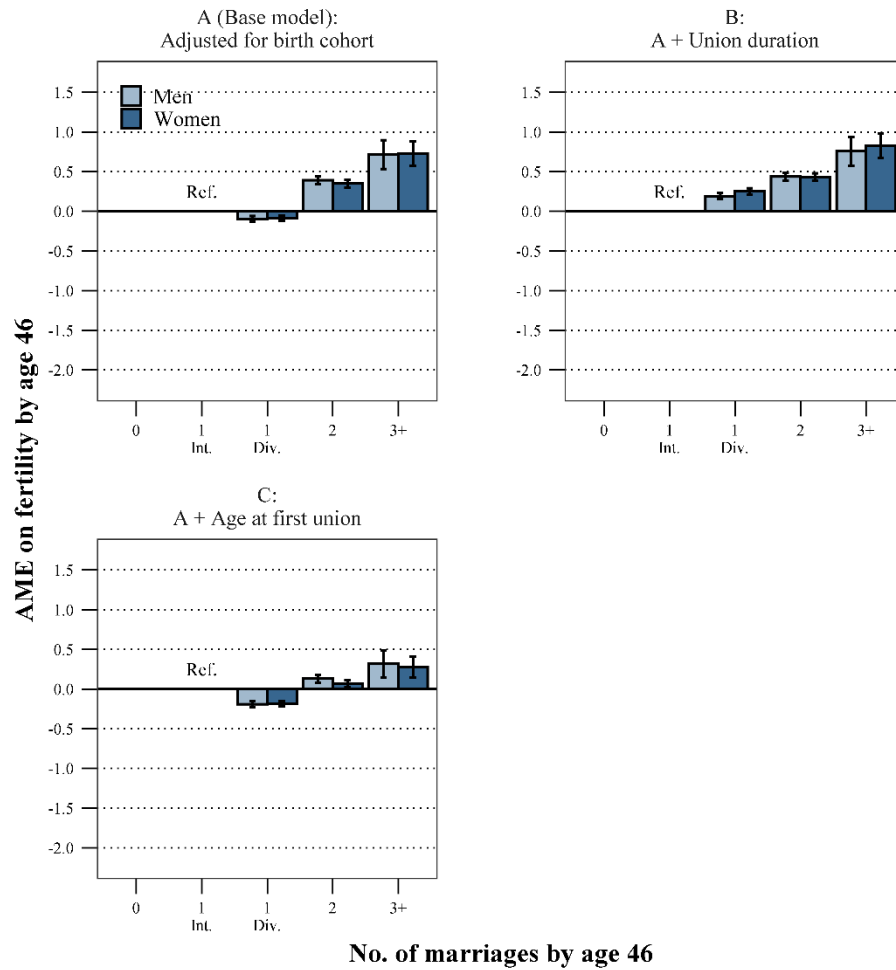


Figure A8. AMEs (with 95% CIs) of the number of marriages on cohort fertility by age 46 for men and women who had at least one child by age 46, adjusted for (A) birth cohort (N=104,340), (B) birth cohort and union duration (N=104,340), and (C) birth cohort and age at first union (N=104,340).

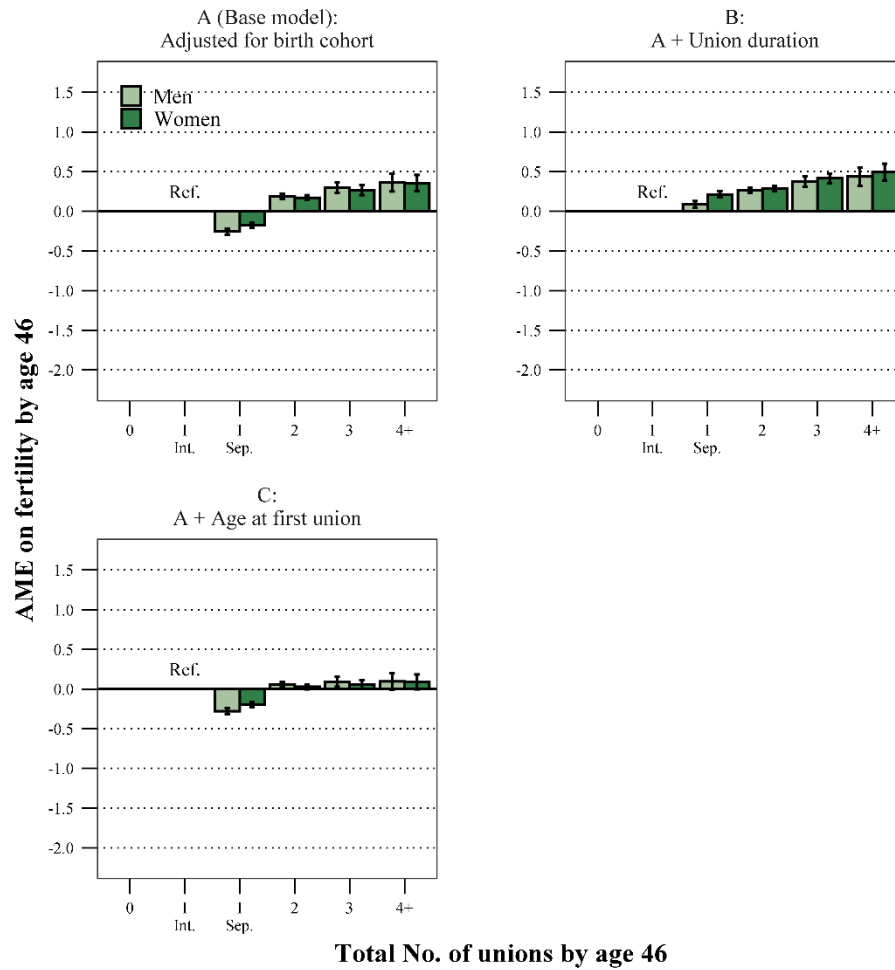


Figure A9. AMEs (with 95% CIs) of the number of all unions (cohabitations and marriages) on cohort fertility by age 46 for men and women who had at least one child by age 46, adjusted for (A) birth cohort (N=128,187), (B) birth cohort, union duration (N=128,187), and (C) birth cohort, age at first union (N=128,187). All models adjusted for parents' socioeconomic position, urban/rural residence, income, and education.

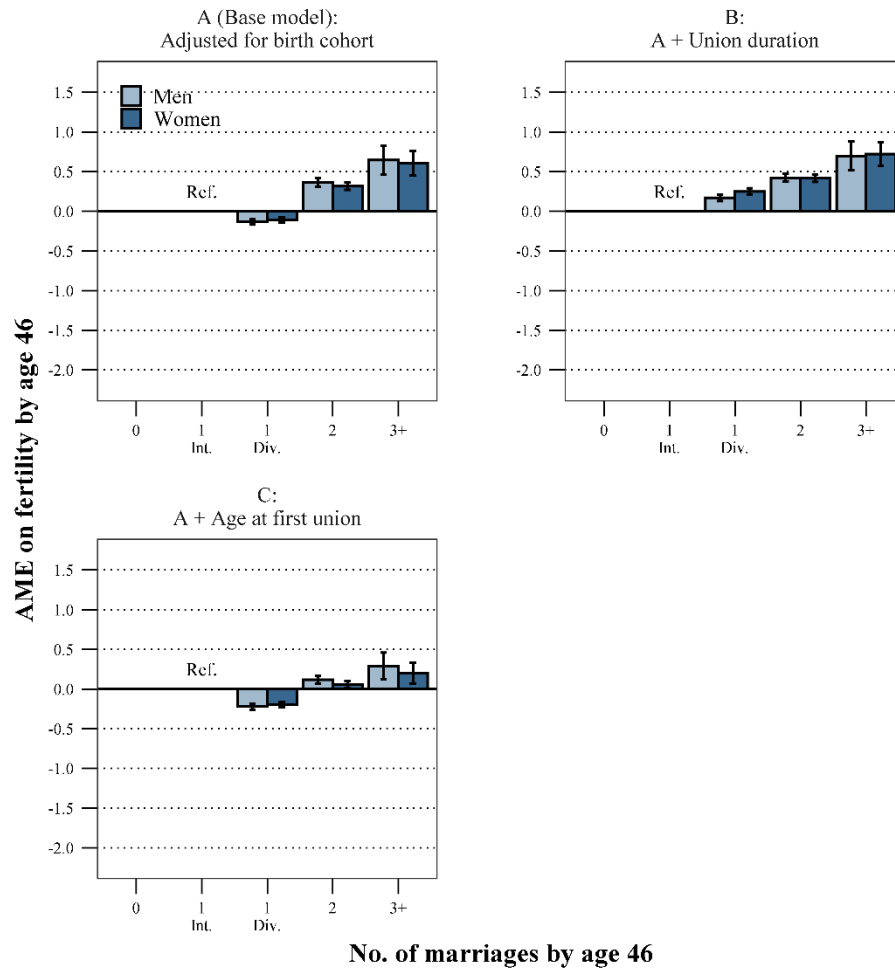


Figure A10. AMEs (with 95% CIs) of the number of marriages on cohort fertility on cohort fertility by age 46 for men and women who had at least one child by age 46, adjusted for (A) birth cohort (N=103,371), (B) birth cohort and union duration (N=103,371), and (C) birth cohort, age at first union (N=103,371). All models adjusted for parents' socioeconomic position, urban/rural residence, income, and education.

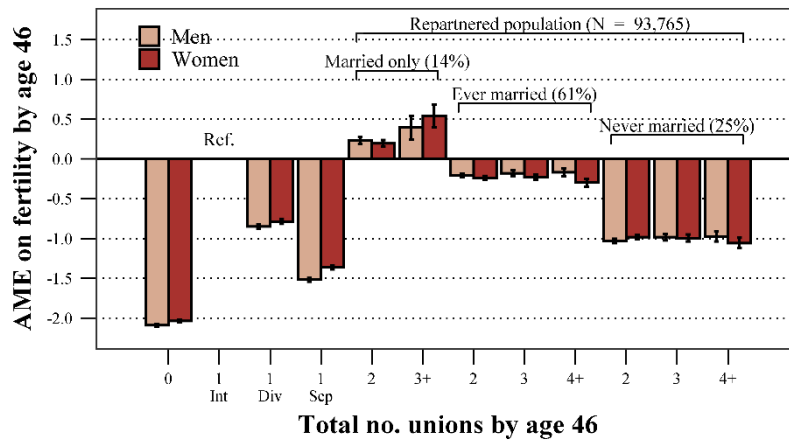


Figure A11. AMEs (with 95% CIs) of the number of all unions (marriages and cohabitations) on cohort fertility by age 46 for men and women by re-partnering trajectory, adjusted for birth cohort, parents' socioeconomic position, urban/rural residence, income and education (N=239,425).

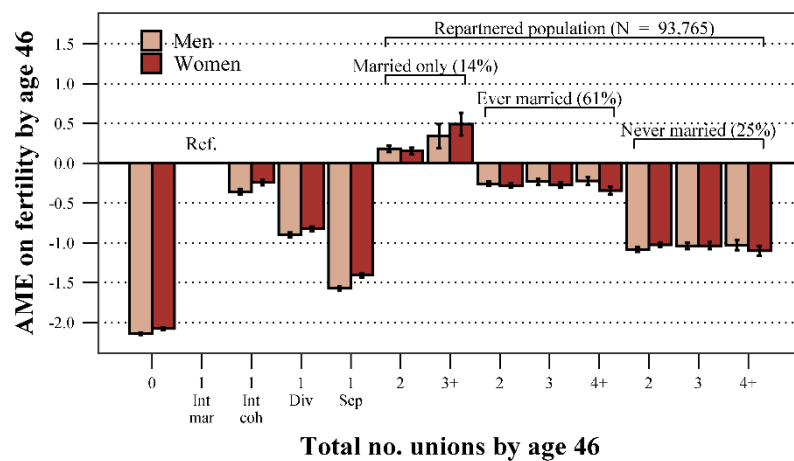


Figure A12. AMEs (with 95% CIs) of the number of all unions (marriages and cohabitations) on cohort fertility by age 46 for men and women by re-partnering trajectory, adjusted for birth cohort, parents' socioeconomic position, urban/rural residence, income and education (N=239,425). Reference category is intact marital unions.

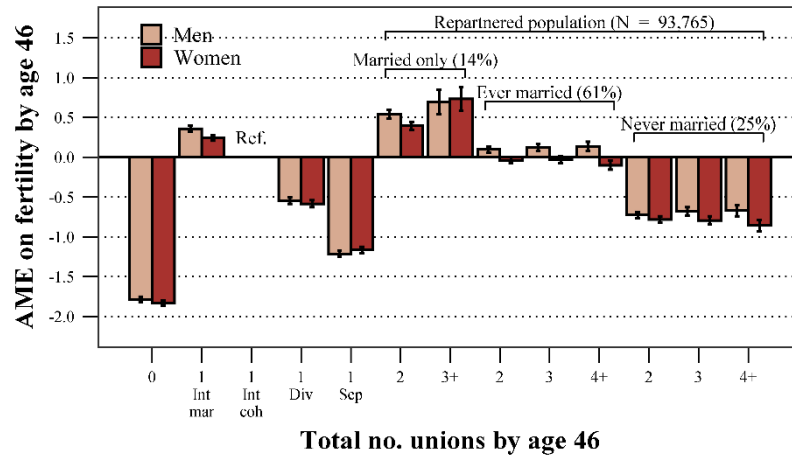


Figure A13. AMEs (95% CIs) of the number of all unions (marriages and cohabitations) on cohort fertility by age 46 for men and women by re-partnering trajectory, adjusted for birth cohort, parents socioeconomic position, urban/rural residence, income and education (N=239,425). Reference category is intact cohabiting unions.

Table A1. Births across number of cumulated unions by age 46, for men and women and by measure of enumeration

All unions		0 unions		1 union		2 unions		3 unions		4+ unions	
	parity	N	%	N	%	N	%	N	%	N	%
Men	0	14525	95	12027	19	5518	18	2049	19	808	18
	1	478	3	9241	15	5985	20	2440	23	1114	24
	2	172	1	23797	38	10451	35	3478	32	1303	29
	3	53	0	11996	19	5366	18	1728	16	701	15
	4+	19	0	5227	8	2737	9	1132	11	635	14
Women	0	8643	85	9600	15	4936	16	1977	17	981	20
	1	950	9	8716	14	5837	19	2371	21	1107	22
	2	387	4	25207	40	11602	37	3793	33	1420	29
	3	125	1	13415	21	6039	19	2096	18	879	18
	4+	53	0	5976	10	2977	9	1161	10	534	11
Marriages		0 marriages		1 marriages		2 marriages		3+ marriages			
sex	parity	N	%	N	%	N	%	N	%		
Men	0	26007	62	8107	11	770	8	43	20		
	1	6524	15	11053	16	1548	17	133	27		
	2	6694	16	29272	41	3037	33	198	27		
	3	2280	5	15260	22	2138	23	166	15		
	4+	779	1	6931	10	1117	19	202	11		
Women	0	17928	50	7285	10	863	8	61	22		
	1	7002	19	10386	14	1467	14	126	24		
	2	7586	21	31178	42	3393	33	252	26		
	3	2626	7	17030	23	2611	26	287	17		
	4+	819	3	7628	11	1866	19	288	11		

Table A2. Descriptive statistics.

	Men (N=122849)	Women (N=120782)	Total (N=243631)
<i>Age at first union</i>			
Mean	25.4	23.3	24.3
Median	24.0	22.0	23.0
Q1, Q3	22.0, 28.0	20.0, 25.0	21.0, 27.0
<i>Age at first marriage</i>			
Mean	30.1	28.0	29.0
Median	29.0	27.0	28.0
Q1, Q3	26.0, 34.0	24.0, 32.0	25.0, 33.0
<i>Union duration</i>			
Mean	18.1	19.7	18.9
Median	20.0	22.0	21.0
Q1, Q3	14.0, 23.0	16.0, 25.0	15.0, 24.0
<i>Marriage duration</i>			
Mean	4.2	4.5	4.3
Median	4.0	5.0	5.0
Q1, Q3	3.0, 5.0	4.0, 6.0	3.0, 5.0
<i>Birth cohort</i>			
1969	32188 (26.2%)	31573 (26.1%)	63761 (26.2%)
1970	31200 (25.4%)	30876 (25.6%)	62076 (25.5%)
1971	30072 (24.5%)	29917 (24.8%)	59989 (24.6%)
1973	29389 (23.9%)	28416 (23.5%)	57805 (23.7%)
<i>Income quartile</i>			
1st	31186 (25.5%)	29259 (24.5%)	60445 (25.0%)
2nd	29398 (24.1%)	31047 (26.0%)	60445 (25.0%)
3rd	29913 (24.5%)	30532 (25.5%)	60445 (25.0%)
4th	31687 (25.9%)	28758 (24.0%)	60445 (25.0%)
<i>Educational level</i>			
Basic	17816 (14.5%)	8976 (7.4%)	26792 (11.0%)
Upper secondary	57690 (47.0%)	43924 (36.4%)	101614 (41.7%)
Lower tertiary	28704 (23.4%)	42974 (35.6%)	71678 (29.4%)
Higher tertiary	18639 (15.2%)	24908 (20.6%)	43547 (17.9%)

<i>Parental SES</i>			
Higher service (I)	16062 (13.1%)	15569 (12.9%)	31631 (13.0%)
Lower service (I)	26530 (21.6%)	25871 (21.4%)	52401 (21.5%)
Higher routine non-manual (IIIa)	7188 (5.9%)	6944 (5.7%)	14132 (5.8%)
Lower routine non-manual (IIIb)	18388 (15.0%)	18371 (15.2%)	36759 (15.1%)
Small proprietors, no employees (IVb)	10074 (8.2%)	9573 (7.9%)	19647 (8.1%)
Self-employed farmers (IVc)	8625 (7.0%)	8148 (6.7%)	16773 (6.9%)
Lower technicians (V)	31 (0.0%)	30 (0.0%)	61 (0.0%)
Skilled manual (VI)	8138 (6.6%)	8164 (6.8%)	16302 (6.7%)
Semi-/unskilled manual (VIIa)	9762 (7.9%)	9765 (8.1%)	19527 (8.0%)
Agricultural workers (VIIb)	418 (0.3%)	408 (0.3%)	826 (0.3%)
Unknown	17633 (14.4%)	17939 (14.9%)	35572 (14.6%)
<i>Municipal characteristics (age 18)</i>			
Rural/semi-urban	47890 (39.4%)	45663 (38.2%)	93553 (38.8%)
Urban	73562 (60.6%)	73729 (61.8%)	147291 (61.2%)

Table A3. Mean and median number of children born by control variables used in multivariate models.

	Men		Women	
	median	mean	median	mean
<i>Income quartile (at age 46)</i>				
1st quartile	1	1.15	2	1.91
2nd quartile	2	1.64	2	1.95
3rd quartile	2	1.8	2	1.78
4th quartile	2	1.94	2	1.63
<i>Educational level (at age 46)</i>				
Basic	1	1.46	2	1.78
Upper secondary	2	1.57	2	1.87
Lower tertiary	2	1.72	2	1.78
Higher tertiary	2	1.79	2	1.74
<i>Parental SES</i>				
Higher service (I)	2	1.69	2	1.75
Lower service (I)	2	1.65	2	1.78
Higher routine non-manual (IIIa)	2	1.64	2	1.8
Lower routine non-manual (IIIb)	2	1.66	2	1.87
Small proprietors, no employees (IVb)	2	1.67	2	1.81
Self-employed farmers (IVc)	2	1.67	2	1.87
Lower technicians (V)	2	1.97	2	2.03
Skilled manual (VI)	2	1.59	2	1.84
Semi-/unskilled manual (VIIa)	2	1.55	2	1.84
Agricultural workers (VIIb)	2	1.61	2	1.97
Unknown	1	1.47	2	1.75
<i>Municipal characteristics (age 18)</i>				
Rural/semi-urban	2	1.68	2	1.89
Urban	2	1.59	2	1.76

Table A4. Prevalence of partnering and re-partnering by age 46, total population of men. All marital and cohabiting unions. Percentages in parenthesis.

Total population		Ever-partnered		Re-partnered
<i>Never partnered</i>	15,243 (12)			
<i>Partnered once, never re- partnered</i>	61,973(51)			
		<i>Intact</i>	46,683 (43)	
		<i>Separated</i>	15,290 (14)	
<i>Ever re-partnered</i>	45,633 (37)			
		<i>2 unions</i>	30,325 (28)	(66)
		<i>3 unions</i>	10,874 (10)	(24)
		<i>4+ unions</i>	4,434 (4)	(10)
<i>Total</i>	122,849 (100)	107,606 (100)		45,633 (100)

Table A5. Prevalence of partnering and re-partnering by age 46, total population of women. All marital and cohabiting unions. Number (percentages).

Total population		Ever-partnered		Re-partnered
<i>Never partnered</i>	10,152 (8)			
<i>Partnered once, never re- partnered</i>	62,498(52)			
		<i>Intact</i>	48,353 (44)	
		<i>Separated</i>	14,145 (13)	
<i>Ever re-partnered</i>	48,132 (40)			
		<i>2 unions</i>	31,731 (29)	
		<i>3 unions</i>	11,471 (10)	(66)
		<i>4+ unions</i>	4,930 (4)	(24)
		<i>5+ unions</i>	48,353 (44)	(10)
<i>Total</i>	120,132 (100)	110,630 (100)		48,132 (100)

Table A6. Prevalence of higher order unions by union type and union type of the first dissolved union. All ever re-partnered men and women, respectively. Number (percentages).

		Higher order unions	
<i>Men</i>		<i>cohabitations</i>	<i>marriages</i>
<i>First union cohabitation</i> 33,194 (73)		26895 (40)	24103 (37)
<i>First union marriage</i> 12,434 (27)		7481 (11)	8207 (12)
<i>Women</i>			
<i>First union cohabitation</i> 34382 (71)		27648 (39)	25616 (36)
<i>First union marriage</i> 13746 (29)		8592 (12)	9023 (12)

Table A7. Poisson regression of completed fertility on total number of unions (marriages and non-marital cohabitations). Corresponds to Figure 1, Plot A.

	Plot A	
	b	se
<i>Sex (Ref. = Men)</i>	1.053***	(0.005)
<i>Number of unions (Ref. = 1 intact union)</i>		
0 unions	0.034***	(0.001)
1 union, separated	0.594***	(0.005)
2 unions	0.892***	(0.005)
3 unions	0.881***	(0.007)
4+ unions	0.885***	(0.010)
<i>Sex × no. of unions</i>		
Women × 0 unions	3.130***	(0.117)
Women × 1 union, separated	1.171***	(0.013)
Women × 2 unions	0.997	(0.007)
Women × 3 unions	0.985	(0.011)
Women × 4+ unions	0.951**	(0.015)
<i>Birth year (Ref. = 1969)</i>		
1970	0.993	(0.004)
1971	0.997	(0.004)
1972	0.997	(0.004)
<i>Cumulated union duration</i>		
<i>Age of first union</i>		
Observations	243631	
Pseudo R ²	0.095	
chi2	75928.6	

Exponentiated coefficients, standard errors in brackets, * p<0.05, ** p<0.01, *** p<0.001

Table A8. Poisson regression of completed fertility on the number of marriages. Corresponds to Figure 1, Plot B.

	Model A	
	b	se
<i>Sex (Ref. = Men)</i>	1.033***	(0.004)
<i>Number of marriages (Ref. = 1)</i>		
0 marriages	0.337***	(0.002)
1 marriage, divorced	0.905***	(0.006)
2 marriages	1.109***	(0.008)
3 marriages	1.238***	(0.028)
<i>Sex × no. of marriages</i>		
Women × 0 marriages	1.284***	(0.011)
Women × 1 marriage, divorced	1.022*	(0.009)
Women × 2 marriages	0.983	(0.010)
Women × 3+ marriages	1.017	(0.030)
<i>Birth year (Ref. = 1969)</i>		
1970	0.993	(0.004)
1971	0.996	(0.004)
1972	0.997	(0.004)
<i>Cumulated marriage duration</i>		
<i>Age of first marriage</i>		
Observations	243631	
Pseudo R ²	0.080	
chi2	64243.4	
Exponentiated coefficients, standard errors in brackets, * p<0.05, ** p<0.01, *** p<0.001		

Table A9. Poisson regression of completed fertility on total number of unions (marriages and non-marital cohabitations) adjusted for control variables. Corresponds to Figure A5.

	A		B		C	
	b	se	b	se	b	se
<i>Sex (Ref. = Men)</i>	1.057***	(0.005)	0.937***	(0.004)	0.936***	(0.004)
<i>Number of unions (Ref. = 1 intact union)</i>						
0 union	0.033***	(0.001)	0.090***	(0.003)		
1 union, separated	0.591***	(0.005)	0.950***	(0.008)	0.595***	(0.005)
2 unions	0.890***	(0.005)	0.977***	(0.005)	0.801***	(0.004)
3 unions	0.877***	(0.007)	0.946***	(0.007)	0.747***	(0.006)
4+ unions	0.879***	(0.010)	0.927***	(0.011)	0.716***	(0.008)
<i>Sex × no. of unions</i>						
Women × 0 unions	3.230***	(0.126)	3.654***	(0.143)		
Women × 1 union, separated	1.184***	(0.013)	1.209***	(0.014)	1.176***	(0.013)
Women × 2 union	0.998	(0.007)	1.037***	(0.008)	1.006	(0.007)
Women × 3 union	0.987	(0.011)	1.056***	(0.012)	1.006	(0.011)
Women × 4+ union	0.953**	(0.015)	1.024	(0.016)	0.981	(0.016)
<i>Birth year (Ref. = 1969)</i>						
1970	0.991*	(0.004)	0.989*	(0.004)	0.990*	(0.004)
1971	0.995	(0.004)	0.990*	(0.004)	0.991*	(0.004)
1972	0.995	(0.004)	0.987**	(0.004)	0.987**	(0.004)
<i>Urban/Rural residence at age 18 (Ref.=Urban)</i>	0.951***	(0.003)	1.043***	(0.004)	1.059***	(0.004)
<i>Income quartile (Ref. = 1st income quartile)</i>						
2nd quartile	1.009*	(0.005)	0.938***	(0.004)	0.987**	(0.005)
3rd quartile	0.987**	(0.005)	0.901***	(0.004)	0.956***	(0.004)
4th quartile	0.976***	(0.005)	0.875***	(0.004)	0.938***	(0.005)
<i>Educational level (Ref. = basic education)</i>						
Upper secondary	0.969***	(0.005)	0.949***	(0.005)	0.995	(0.006)
Lower tertiary	0.941***	(0.006)	0.950***	(0.006)	1.009	(0.006)
Higher tertiary	0.950***	(0.006)	1.019**	(0.007)	1.082***	(0.007)
<i>Parental socioeconomic position (EGP)</i>						
II	0.988*	(0.005)	0.983**	(0.005)	0.983**	(0.005)
IIIa	0.991	(0.008)	0.987	(0.008)	0.984*	(0.008)
IIIb	0.999	(0.006)	0.978***	(0.006)	0.980**	(0.006)
IVb	0.984*	(0.007)	0.975***	(0.007)	0.972***	(0.007)
IVc	1.008	(0.008)	1.018*	(0.008)	1.026***	(0.008)
V	1.056	(0.096)	1.023	(0.093)	1.000	(0.091)
VI	0.982*	(0.007)	0.960***	(0.007)	0.961***	(0.007)
VIIa	0.978**	(0.007)	0.965***	(0.007)	0.961***	(0.007)

VIIIb	1.008	(0.027)	0.995	(0.026)	0.992	(0.026)
Unknown	0.964***	(0.006)	0.957***	(0.006)	0.950***	(0.006)
<i>Cumulated union duration</i>			1.051***	(0.000)		
<i>Age of first union</i>					0.951***	(0.000)
Observations	239425		239425		215981	
Pseudo R ²	0.091		0.128		0.035	
chi2	71783.6		101079.9		24708.3	

Exponentiated coefficients, standard errors in brackets, * p<0.05, ** p<0.01, *** p<0.001.

Table A10. Poisson regression of completed fertility on total number of marriages adjusted for control variables. Corresponds to Figure A6.

	A		B		C	
	b	se	b	se	b	se
<i>Sex (Ref. = Men)</i>	1.043***	(0.004)	0.976***	(0.004)	0.964***	(0.004)
<i>Number of unions (Ref. = 1 intact union)</i>						
0 marriages	0.336***	(0.002)	0.607***	(0.006)		
1 marriage, separated	0.896***	(0.006)	1.108***	(0.008)	0.843***	(0.006)
2 marriages	1.105***	(0.008)	1.126***	(0.008)	0.939***	(0.007)
3+ marriages	1.220***	(0.028)	1.223***	(0.028)	0.973	(0.023)
<i>Sex × no. of unions</i>						
Women × 0 marriages	1.311***	(0.012)	1.403***	(0.013)		
Women × 1 marriage, separated	1.026**	(0.009)	1.062***	(0.009)	1.021*	(0.009)
Women × 2 marriage	0.981	(0.010)	1.012	(0.010)	0.977*	(0.010)
Women × 3+ marriage	1.019	(0.031)	1.071*	(0.032)	1.011	(0.031)
<i>Birth year (Ref. = 1969)</i>						
1970	0.991*	(0.004)	0.991*	(0.004)	0.998	(0.005)
1971	0.995	(0.004)	0.993	(0.004)	1.006	(0.005)
1972	0.995	(0.004)	0.992	(0.004)	1.007	(0.005)
<i>Urban/Rural residence at age 18 (Ref.=Urban)</i>	0.951***	(0.003)	1.045***	(0.004)	1.059***	(0.004)
<i>Income quartile (Ref. = 1st income quartile)</i>						
2nd quartile	1.044***	(0.005)	1.018***	(0.005)	0.971***	(0.005)
3rd quartile	1.015**	(0.005)	0.982***	(0.005)	0.939***	(0.005)
4th quartile	0.995	(0.005)	0.956***	(0.005)	0.913***	(0.005)
<i>Educational level (Ref. = basic education)</i>						
Upper secondary	0.957***	(0.005)	0.943***	(0.005)	0.982**	(0.006)
Lower tertiary	0.910***	(0.005)	0.904***	(0.005)	0.961***	(0.007)
Higher tertiary	0.896***	(0.006)	0.913***	(0.006)	0.971***	(0.007)
<i>Parental socioeconomic position (EGP)</i>						
II	1.063***	(0.004)	1.054***	(0.004)	1.045***	(0.004)
IIIa	0.996	(0.005)	0.995	(0.005)	0.989	(0.006)
IIIb	1.006	(0.008)	1.006	(0.008)	0.996	(0.008)
IVb	1.020***	(0.006)	1.014*	(0.006)	0.995	(0.006)
IVc	1.005	(0.007)	1.001	(0.007)	0.983*	(0.008)
V	1.019*	(0.008)	1.017*	(0.008)	1.013	(0.008)
VI	1.138	(0.103)	1.132	(0.103)	1.139	(0.111)
VIIa	1.009	(0.008)	1.000	(0.008)	0.984	(0.008)
VIIb	1.009	(0.007)	1.004	(0.007)	0.985	(0.008)

Unknown	1.059*	(0.028)	1.052	(0.028)	1.002	(0.030)
<i>Cumulated marriage duration</i>			1.031***	(0.000)		
<i>Age of first marriage</i>					0.967***	(0.000)
Observations	239425		239425		163700	
Pseudo R ²	0.079		0.091		0.026	
chi2	62087.7		71784.1		13953.9	

Exponentiated coefficients, standard errors in brackets, * p<0.05, ** p<0.01, *** p<0.001.

Table A11. Poisson regression of completed fertility on total number of unions (marriages and non-marital cohabitations) for individuals who had at least one child in a first order union by age 46. Corresponds to Figure A7, Models A, B and C.

	A		B		C	
	b	se	b	se	b	se
<i>Sex (Ref. = Men)</i>	1.022***	(0.005)	0.980***	(0.004)	0.974***	(0.004)
<i>Number of unions (Ref. = 1 intact union)</i>						
1 union, separated	0.891***	(0.008)	1.036***	(0.009)	0.887***	(0.008)
2 unions	1.080***	(0.007)	1.113***	(0.008)	1.023***	(0.007)
3 unions	1.127***	(0.014)	1.160***	(0.015)	1.038**	(0.013)
4+ unions	1.152***	(0.024)	1.186***	(0.025)	1.040	(0.022)
<i>Sex × no. of unions</i>						
Women × 1 union, separated	1.040***	(0.012)	1.054***	(0.012)	1.035**	(0.012)
Women × 2 union	0.992	(0.009)	1.010	(0.010)	0.989	(0.009)
Women × 3 union	0.985	(0.017)	1.018	(0.018)	0.986	(0.017)
Women × 4+ union	0.995	(0.028)	1.024	(0.029)	0.999	(0.028)
<i>Birth year (Ref. = 1969)</i>						
1970	0.996	(0.005)	0.996	(0.005)	0.997	(0.005)
1971	1.002	(0.005)	1.001	(0.005)	1.003	(0.005)
1972	1.000	(0.005)	0.998	(0.005)	1.000	(0.005)
<i>Cumulated union duration</i>			1.021***	(0.000)		
<i>Age of first union</i>					0.976***	(0.000)
Observations	129351		129351		129351	
Pseudo R ²	0.002		0.010		0.009	
chi2	931.3		4190.7		3801.7	

Exponentiated coefficients, standard errors in brackets, * p<0.05, ** p<0.01, *** p<0.001.

Table A12. Poisson regression of completed fertility on total number of marriages for individuals who had at least one child in a first order union by age 46. Corresponds to Figure A8, Models A, B and C.

	A		B		C	
	b	se	b	se	b	se
<i>Sex (Ref. = Men)</i>	1.021***	(0.005)	0.987**	(0.005)	0.976***	(0.005)
<i>Number of unions (Ref. = 1 intact marriage)</i>						
1 marriage, separated	0.960***	(0.007)	1.081***	(0.009)	0.925***	(0.007)
2 marriages	1.162***	(0.011)	1.183***	(0.011)	1.052***	(0.010)
3 marriages+	1.296***	(0.038)	1.316***	(0.039)	1.125***	(0.034)
<i>Sex × no. of unions</i>						
Women × 1 marriage, separated	1.004	(0.010)	1.024*	(0.011)	1.000	(0.010)
Women × 2 marriages	0.982	(0.012)	1.000	(0.013)	0.977	(0.012)
Women × 3+ marriages	0.998	(0.039)	1.024	(0.040)	0.988	(0.039)
<i>Birth year (Ref. = 1969)</i>						
1970	0.996	(0.005)	0.995	(0.005)	0.999	(0.005)
1971	1.001	(0.006)	0.999	(0.006)	1.007	(0.006)
1972	0.999	(0.006)	0.996	(0.006)	1.006	(0.006)
<i>Cumulated marriage duration</i>			1.017***	(0.000)		
<i>Age of first marriage</i>					0.977***	(0.000)
Observations	104340		104340		104316	
Pseudo R ²	0.002		0.007		0.012	
chi2	791.0		2431.3		4068.2	

Exponentiated coefficients, standard errors in brackets, * p<0.05, ** p<0.01, *** p<0.001.

Table A13. Poisson regression of completed fertility on total number of unions (marriages and non-marital cohabitations) for individuals who had at least one child in a first order union by age 46. Adjusted for control variables. Corresponds to Figure A9, Models A, B and C.

	A		B		C	
	b	se	b	se	b	se
<i>Sex (Ref. = Men)</i>	1.019***	(0.005)	0.967***	(0.005)	0.960***	(0.005)
<i>Number of unions (Ref. = 1 intact union)</i>						
1 union, separated	0.875***	(0.008)	1.026**	(0.009)	0.875***	(0.008)
2 unions	1.070***	(0.007)	1.108***	(0.008)	1.019**	(0.007)
3 unions	1.105***	(0.014)	1.144***	(0.015)	1.028*	(0.013)
4+ unions	1.117***	(0.024)	1.154***	(0.024)	1.018	(0.022)
<i>Sex × no. of unions</i>						
Women × 1 union, separated	1.053***	(0.012)	1.069***	(0.012)	1.047***	(0.012)
Women × 2 union	0.993	(0.010)	1.015	(0.010)	0.992	(0.010)
Women × 3 union	0.986	(0.017)	1.023	(0.018)	0.989	(0.017)
Women × 4+ union	0.993	(0.028)	1.026	(0.029)	1.000	(0.029)
<i>Birth year (Ref. = 1969)</i>						
1970	0.997	(0.005)	0.996	(0.005)	0.996	(0.005)
1971	1.003	(0.005)	1.002	(0.005)	1.002	(0.005)
1972	1.001	(0.005)	0.998	(0.005)	0.999	(0.005)
<i>Urban/Rural residence at age 18 (Ref.=Urban)</i>	0.951***	(0.003)	1.045***	(0.004)	1.059***	(0.004)
<i>Income quartile (Ref. = 1st income quartile)</i>						
2nd quartile	1.044***	(0.005)	1.018***	(0.005)	0.971***	(0.005)
3rd quartile	1.015**	(0.005)	0.982***	(0.005)	0.939***	(0.005)
4th quartile	0.995	(0.005)	0.956***	(0.005)	0.913***	(0.005)
<i>Educational level (Ref. = basic education)</i>						
Upper secondary	0.957***	(0.005)	0.943***	(0.005)	0.982**	(0.006)
Lower tertiary	0.910***	(0.005)	0.904***	(0.005)	0.961***	(0.007)
Higher tertiary	0.896***	(0.006)	0.913***	(0.006)	0.971***	(0.007)
<i>Parental socioeconomic position (EGP)</i>						
II	0.989	(0.006)	0.987*	(0.006)	0.986*	(0.006)
IIIa	0.988	(0.009)	0.988	(0.009)	0.985	(0.009)
IIIb	0.987	(0.007)	0.981**	(0.007)	0.977***	(0.007)
IVb	0.983*	(0.008)	0.980*	(0.008)	0.977**	(0.008)
IVc	1.011	(0.009)	1.019*	(0.009)	1.021*	(0.009)
V	1.121	(0.118)	1.115	(0.117)	1.102	(0.116)
VI	0.974**	(0.009)	0.967***	(0.008)	0.961***	(0.008)

VIIa	0.974**	(0.008)	0.969***	(0.008)	0.963***	(0.008)
VIIb	0.994	(0.030)	0.995	(0.030)	0.985	(0.030)
Unknown	0.987	(0.007)	0.984*	(0.007)	0.978**	(0.007)
<i>Cumulated union duration</i>			1.023***	(0.000)		
<i>Age of first union</i>					0.975***	(0.000)
Observations	128187		128187		128187	
Pseudo R ²	0.004		0.013		0.012	
chi2	1685.7		5180.4		4644.2	

Exponentiated coefficients, standard errors in brackets, * p<0.05, ** p<0.01, *** p<0.001.

Table A14. Poisson regression of completed fertility on total number marriages for individuals who had at least one child in a first order union by age 46. Adjusted for control variables. Corresponds to Figure A10, Models A, B and C.

	A		B		C	
	b	se	b	se	b	se
<i>Sex (Ref. = Men)</i>	1.017***	(0.005)	0.976***	(0.005)	0.968***	(0.005)
<i>Number of marriages (Ref. = 1 intact marriage)</i>						
1 marriage, separated	0.945***	(0.007)	1.071***	(0.009)	0.913***	(0.007)
2 marriages	1.150***	(0.011)	1.175***	(0.011)	1.047***	(0.010)
3+ marriages	1.266***	(0.038)	1.290***	(0.039)	1.114***	(0.034)
<i>Sex × no. of unions</i>						
Women × 1 marriage, separated	1.012	(0.011)	1.034**	(0.011)	1.008	(0.011)
Women × 2 marriages	0.981	(0.013)	1.001	(0.013)	0.978	(0.012)
Women × 3+ marriages	0.984	(0.038)	1.013	(0.040)	0.972	(0.038)
<i>Birth year (Ref. = 1969)</i>						
1970	0.997	(0.005)	0.996	(0.005)	0.999	(0.005)
1971	1.002	(0.006)	1.000	(0.006)	1.008	(0.006)
1972	1.001	(0.006)	0.997	(0.006)	1.007	(0.006)
<i>Urban/Rural residence at age 18 (Ref.=Urban)</i>						
	1.049***	(0.004)	1.049***	(0.004)	1.044***	(0.004)
<i>Income quartile (Ref. = 1st income quartile)</i>						
2nd quartile	0.942***	(0.006)	0.927***	(0.006)	0.942***	(0.006)
3rd quartile	0.908***	(0.006)	0.889***	(0.005)	0.906***	(0.006)
4th quartile	0.894***	(0.006)	0.871***	(0.006)	0.887***	(0.006)
<i>Educational level (Ref. = basic education)</i>						
Upper secondary	0.965***	(0.008)	0.963***	(0.008)	0.978**	(0.008)
Lower tertiary	0.934***	(0.008)	0.946***	(0.008)	0.961***	(0.008)
Higher tertiary	0.939***	(0.008)	0.975**	(0.009)	0.977**	(0.009)
<i>Parental socioeconomic position (EGP)</i>						
II	0.990	(0.007)	0.989	(0.007)	0.991	(0.007)
IIIa	0.991	(0.010)	0.990	(0.010)	0.992	(0.010)
IIIb	0.992	(0.008)	0.986	(0.008)	0.991	(0.008)
IVb	0.986	(0.009)	0.983	(0.009)	0.986	(0.009)
IVc	1.017	(0.010)	1.023*	(0.010)	1.020*	(0.010)
V	1.173	(0.136)	1.167	(0.135)	1.155	(0.134)
VI	0.978*	(0.009)	0.972**	(0.009)	0.981*	(0.009)
VIIa	0.979*	(0.009)	0.974**	(0.009)	0.983	(0.009)
VIIb	1.000	(0.035)	0.998	(0.035)	0.999	(0.035)

Unknown	0.992	(0.008)	0.989	(0.008)	0.990	(0.008)
<i>Cumulated marriage duration</i>			1.018***	(0.000)		
<i>Age of first marriage</i>					0.977***	(0.000)
Observations	103371		103371		103351	
Pseudo R ²	0.005		0.010		0.015	
chi2	1646.5		3341.8		4792.5	

Exponentiated coefficients, standard errors in brackets, * p<0.05, ** p<0.01, *** p<0.001.

Table A15. Poisson regression of completed fertility on union trajectory. Corresponds to Figure 3.

	b	se
<i>Sex (Ref. = Men)</i>	1.043***	(0.005)
<i>Union trajectory (Ref. = 1 intact union)</i>		
0 unions	0.032***	(0.001)
1 marriage, divorced	0.621***	(0.006)
1 cohabitation, separated	0.305***	(0.004)
2 marriages (marriage only)	1.111***	(0.010)
3+ marriages (marriages only)	1.206***	(0.036)
2 ever married (at least one cohabitation & one marriage)	0.908***	(0.006)
3 ever married (at least one cohabitation & one marriage)	0.927***	(0.008)
4+ ever married (at least one cohabitation & one marriage)	0.945***	(0.012)
2 Never married	0.536***	(0.006)
3 Never married	0.560***	(0.010)
4+ Never married	0.566***	(0.015)
<i>Sex × union trajectory</i>		
Women × 0 unions	3.160***	(0.118)
Women × 1 marriage, divorced	1.066***	(0.016)
Women × 1 cohabitation, separated	1.308***	(0.026)
Women × 2 marriages (marriage only)	0.983	(0.012)
Women × 3+ marriages (marriages only)	1.046	(0.041)
Women × 2 ever married (at least one cohabitation & one marriage)	0.988	(0.009)
Women × 3 ever married (at least one cohabitation & one marriage)	0.977	(0.012)
Women × 4+ ever married (at least one cohabitation & one marriage)	0.937***	(0.016)
Women × 2 Never married	1.071***	(0.016)
Women × 3 Never married	1.017	(0.025)
Women × 4+ Never married	0.965	(0.036)
<i>Birth year (Ref. = 1969)</i>		
1970	0.993	(0.004)
1971	0.997	(0.004)
1972	0.998	(0.004)
Observations	243631	
Pseudo R ²	0.120	
chi2	96281.5	

Exponentiated coefficients, standard errors in brackets, * p<0.05, ** p<0.01, *** p<0.001.

Table A16. Poisson regression of completed fertility on union trajectory. Adjusted for control variables Corresponds to Figure A11.

	b	se
<i>Sex (Ref. = Men)</i>	1.049***	(0.005)
<i>Union trajectory (Ref. = 1 intact union)</i>		
0 unions	0.030***	(0.001)
1 marriage, divorced	0.606***	(0.006)
1 cohabitation, separated	0.295***	(0.004)
2 marriages (marriage only)	1.108***	(0.010)
3+ marriages (marriages only)	1.182***	(0.036)
2 ever married (at least one cohabitation & one marriage)	0.904***	(0.006)
3 ever married (at least one cohabitation & one marriage)	0.917***	(0.008)
4+ ever married (at least one cohabitation & one marriage)	0.922***	(0.012)
2 Never married	0.522***	(0.006)
3 Never married	0.544***	(0.010)
4+ Never married	0.548***	(0.015)
<i>Sex × union trajectory</i>		
Women × 0 unions	3.302***	(0.129)
Women × 1 marriage, divorced	1.077***	(0.016)
Women × 1 cohabitation, separated	1.346***	(0.027)
Women × 2 marriages (marriage only)	0.980	(0.012)
Women × 3+ marriages (marriages only)	1.047	(0.042)
Women × 2 ever married (at least one cohabitation & one marriage)	0.990	(0.009)
Women × 3 ever married (at least one cohabitation & one marriage)	0.980	(0.012)
Women × 4+ ever married (at least one cohabitation & one marriage)	0.941***	(0.017)
Women × 2 Never married	1.085***	(0.017)
Women × 3 Never married	1.031	(0.025)
Women × 4+ Never married	0.972	(0.037)
<i>Birth year (Ref. = 1969)</i>		
1970	0.993	(0.004)
1971	0.998	(0.004)
1972	0.998	(0.004)
<i>Urban/Rural residence at age 18 (Ref.=Urban)</i>	1.055***	(0.004)
<i>Income quartile (Ref. = 1st income quartile)</i>		
2nd quartile	0.987**	(0.004)
3rd quartile	0.958***	(0.004)
4th quartile	0.938***	(0.005)
<i>Educational level (Ref. = basic education)</i>		
Upper secondary	0.950***	(0.005)
Lower tertiary	0.906***	(0.005)
Higher tertiary	0.901***	(0.006)

<i>Parental socioeconomic position (EGP)</i>		
II	0.992	(0.005)
IIIa	0.999	(0.008)
IIIb	1.010	(0.006)
IVb	0.993	(0.007)
IVc	1.019*	(0.008)
V	1.091	(0.099)
VI	0.997	(0.008)
VIIa	0.998	(0.007)
VIIIb	1.040	(0.028)
Unknown	0.978***	(0.006)
Observations	239425	
Pseudo R ²	0.117	
chi2	92528.9	

Exponentiated coefficients, standard errors in brackets, * p<0.05, ** p<0.01, *** p<0.001.

Table A17. Poisson regression of completed fertility on union trajectory. Reference category is intact marital unions. Adjusted for control variables. Corresponds to Figure A12.

	b	se
<i>Sex (Ref. = Men)</i>	1.044***	(0.005)
<i>Union trajectory (Ref. = 1 intact marriage)</i>		
0 unions	0.030***	(0.001)
1 Intact cohabitation	0.838***	(0.008)
1 marriage, divorced	0.592***	(0.006)
1 cohabitation, separated	0.288***	(0.004)
2 marriages (marriages only)	1.083***	(0.010)
3+ marriages (marriages only)	1.154***	(0.035)
2 ever married (at least one cohabitation & one marriage)	0.883***	(0.006)
3 ever married (at least one cohabitation & one marriage)	0.895***	(0.008)
4+ ever married (at least one cohabitation & one marriage)	0.900***	(0.012)
2 Never married	0.509***	(0.006)
3 Never married	0.531***	(0.009)
4+ Never married	0.534***	(0.014)
<i>Sex × union trajectory</i>		
Women × 0	3.324***	(0.130)
Women × 1 Intact cohabitation	1.068***	(0.014)
Women × 1 marriage, divorced	1.084***	(0.016)
Women × 1 cohabitation, separated	1.356***	(0.027)
Women × 2 marriages (marriages only)	0.985	(0.013)
Women × 3+ marriages (marriages only)	1.052	(0.042)
Women × 2 ever married (at least one cohabitation & one marriage)	0.995	(0.009)
Women × 3 ever married (at least one cohabitation & one marriage)	0.985	(0.012)
Women × 4+ ever married (at least one cohabitation & one marriage)	0.946**	(0.017)
Women × 2 Never married	1.092***	(0.017)
Women × 3 Never married	1.038	(0.025)
Women × 4+ Never married	0.978	(0.037)
<i>Birth year (Ref. = 1969)</i>		
1970	0.993	(0.004)
1971	0.998	(0.004)
1972	0.999	(0.004)
<i>Urban/Rural residence at age 18 (Ref.=Urban)</i>	1.053***	(0.004)
<i>Income quartile (Ref. = 1st income quartile)</i>		
2nd quartile	0.983***	(0.004)
3rd quartile	0.953***	(0.004)
4th quartile	0.933***	(0.005)
<i>Educational level (Ref. = basic education)</i>		

Upper secondary	0.948***	(0.005)
Lower tertiary	0.902***	(0.005)
Higher tertiary	0.897***	(0.006)
<i>Parental socioeconomic position (EGP)</i>		
II	0.992	(0.005)
IIIa	0.999	(0.008)
IIIb	1.009	(0.006)
IVb	0.992	(0.007)
IVc	1.016*	(0.008)
V	1.088	(0.099)
VI	0.996	(0.008)
VIIa	0.998	(0.007)
VIIb	1.040	(0.028)
Unknown	0.978***	(0.006)
Observations	239425	
Pseudo R ²	0.083	
chi2	65904.3	

Exponentiated coefficients, standard errors in brackets, * p<0.05, ** p<0.01, *** p<0.001.

Table A18. Poisson regression of completed fertility on union trajectory. Reference category is intact marital unions. Adjusted for control variables. Corresponds to Figure A13.

	b	se
<i>Sex (Ref. = Men)</i>	1.115***	(0.014)
<i>Union trajectory (Ref. = 1 intact non-marital cohabitation)</i>		
0 unions	0.035***	(0.001)
1 intact marriage	1.193***	(0.012)
1 marriage, divorce	0.706***	(0.010)
1 cohabitation, separated	0.343***	(0.006)
2 marriages (marriages only)	1.292***	(0.016)
3+ marriages (marriages only)	1.377***	(0.043)
2 ever married (at least one cohabitation & one marriage)	1.053***	(0.011)
3 ever married (at least one cohabitation & one marriage)	1.068***	(0.013)
4+ ever married (at least one cohabitation & one marriage)	1.074***	(0.017)
2 Never married	0.608***	(0.009)
3 Never married	0.633***	(0.012)
4+ Never married	0.637***	(0.018)
<i>Sex × union trajectory</i>		
Women × 0 unions	3.112***	(0.127)
Women × 1 Intact marriage	0.936***	(0.012)
Women × 1 marriage, divorced	1.014	(0.019)
Women × 1 cohabitation, separated	1.269***	(0.029)
Women × 2 marriages (marriages only)	0.922***	(0.016)
Women × 3+ marriages (marriages only)	0.985	(0.041)
Women × 2 ever married (at least one cohabitation & one marriage)	0.932***	(0.013)
Women × 3 ever married (at least one cohabitation & one marriage)	0.923***	(0.015)
Women × 4+ ever married (at least one cohabitation & one marriage)	0.886***	(0.019)
Women × 2 Never married	1.022	(0.019)
Women × 3 Never married	0.971	(0.026)
Women × 4+ Never married	0.916*	(0.036)
<i>Birth year (Ref. = 1969)</i>		
1970	0.993	(0.004)
1971	0.998	(0.004)
1972	0.999	(0.004)
<i>Urban/Rural residence at age 18 (Ref.=Urban)</i>	1.053***	(0.004)
<i>Income quartile (Ref. = 1st income quartile)</i>		
2nd quartile	0.983***	(0.004)
3rd quartile	0.953***	(0.004)
4th quartile	0.933***	(0.005)
<i>Educational level (Ref. = basic education)</i>		
Upper secondary	0.948***	(0.005)

Lower tertiary	0.902***	(0.005)
Higher tertiary	0.897***	(0.006)
<i>Parental socioeconomic position (EGP)</i>		
II	0.992	(0.005)
IIIa	0.999	(0.008)
IIIb	1.009	(0.006)
IVb	0.992	(0.007)
IVc	1.016*	(0.008)
V	1.088	(0.099)
VI	0.996	(0.008)
VIIa	0.998	(0.007)
VIIIb	1.040	(0.028)
Unknown	0.978***	(0.006)
Observations	239425	
Pseudo R ²	0.118	
chi2	93039.5	

Exponentiated coefficients, standard errors in brackets, * p<0.05, ** p<0.01, *** p<0.001.