

“Outside the Skin:” The Persistence of Black-White Disparities in U.S. Early-Life Mortality

Andrea M. Tilstra*, University of Oxford, Andrea.Tilstra@sociology.ox.ac.uk;

Iliya Gutin*, University of Texas – Austin, iliya.gutin@austin.utexas.edu;

Nathan T. Dollar, University of North Carolina – Chapel Hill; ntdollar@live.unc.edu;

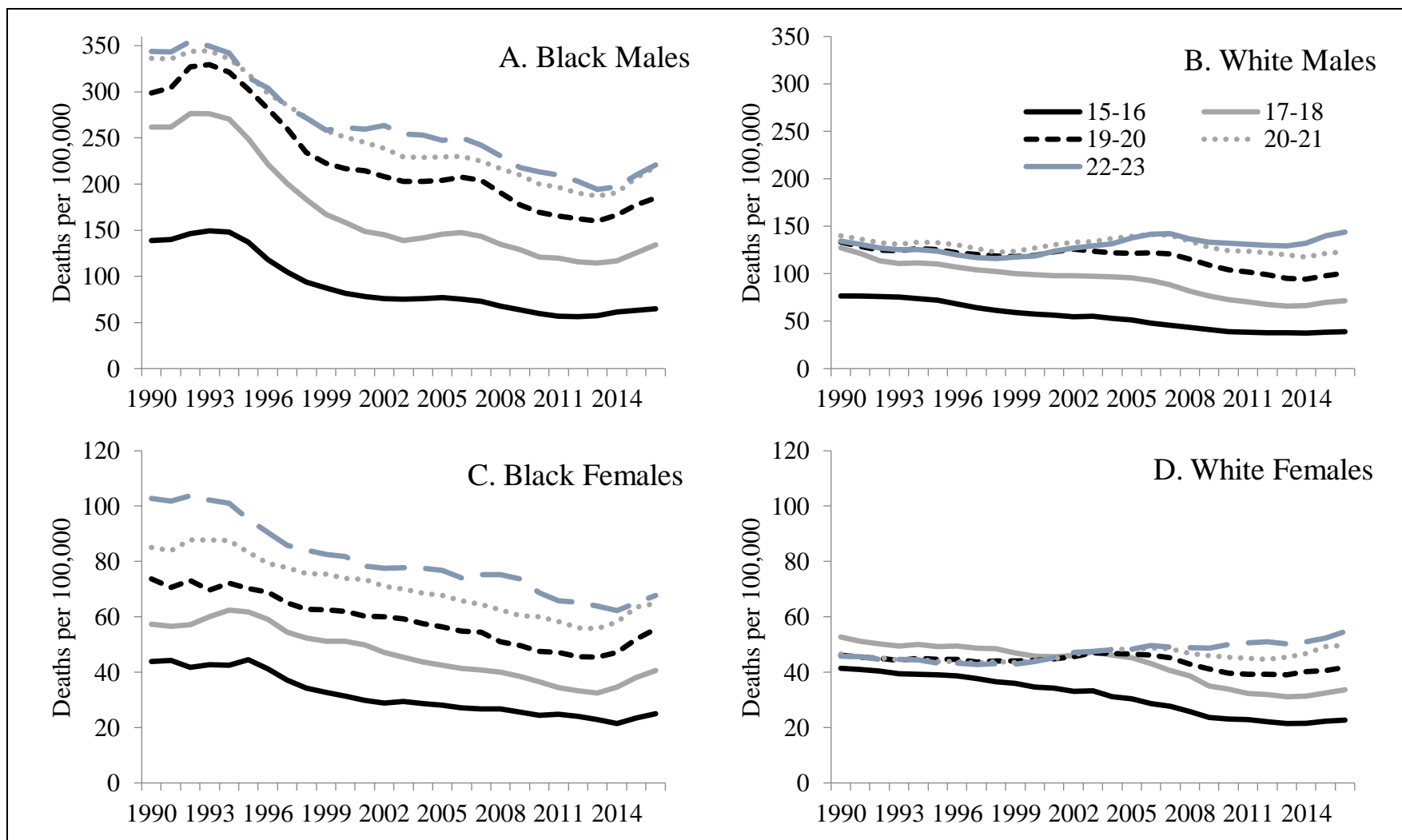
Richard G. Rogers, University of Colorado Boulder; Richard.rogers@colorado.edu;

Robert A. Hummer, University of North Carolina – Chapel Hill, rhummer@email.unc.edu

*Authors contributed equally to this work.

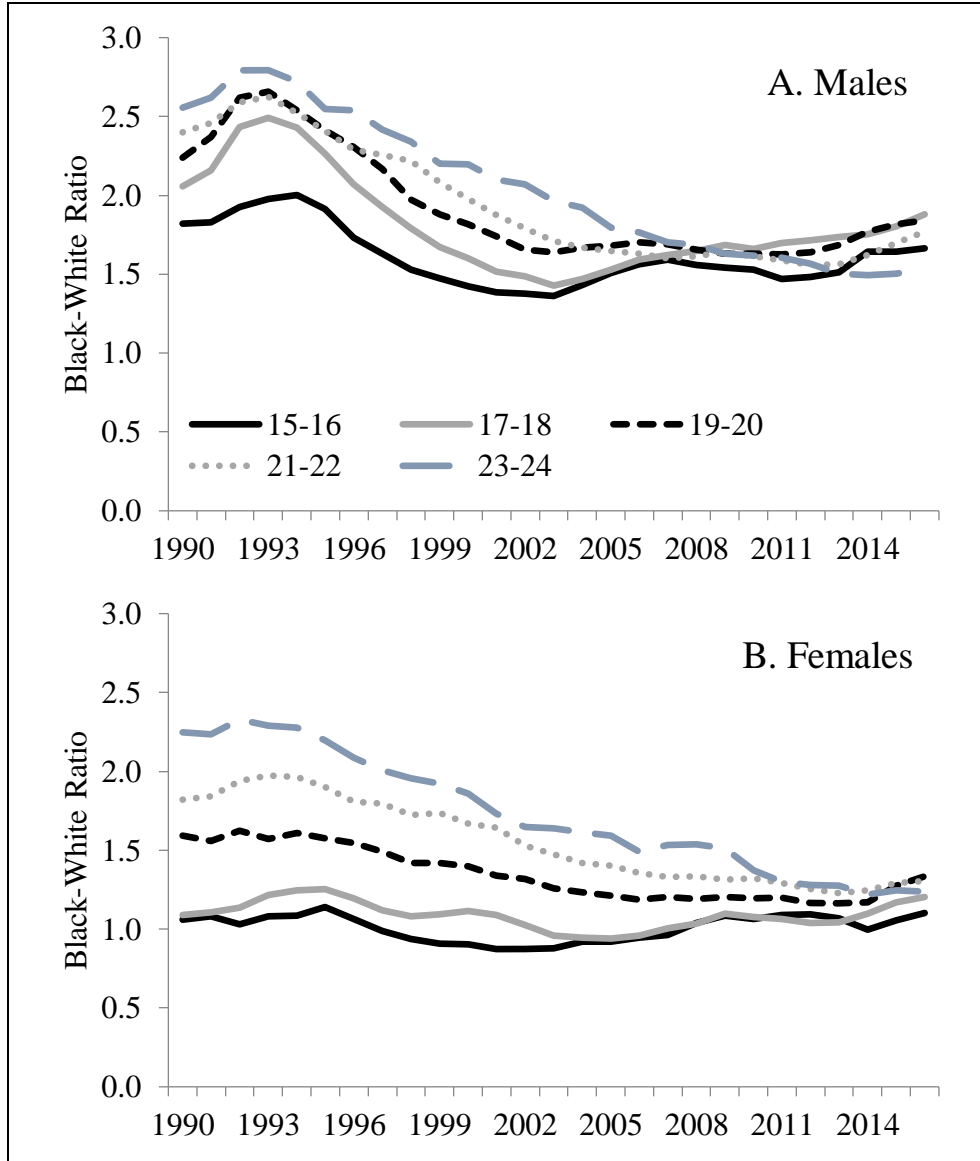
- I. Figure S1. United States All Cause Age-Specific Mortality Rates, Ages 15-24, 1990-2016
- II. Figure S2. United States All Cause Age-Specific Mortality Ratios, Ages 15-24, 1990-2016

Figure S1. United States All Cause Age-Specific Mortality Rates, Ages 15-24, 1990-2016



Notes: Data come from National Vital Statistics System mortality files and Surveillance, Epidemiology, and End Result Program population counts. Three-year moving averages.

Figure S2. United States All Cause Age-Specific Mortality Ratios, Ages 15-24, 1990-2016



Notes: Data come from National Vital Statistics System mortality files and Surveillance, Epidemiology, and End Result Program population counts. Three-year moving averages.